

1. In order to use the PortSwitchTool, you should pay attention to the 2 items.

1) Connect data card with PC, and make sure that drivers have been installed.

2) The two files SwitchPort.ini and PortSwitchTool.exe must in the same directory, or else the software cannot work correctly.



PortSwitchTool.exe
PortSwitchTool M...

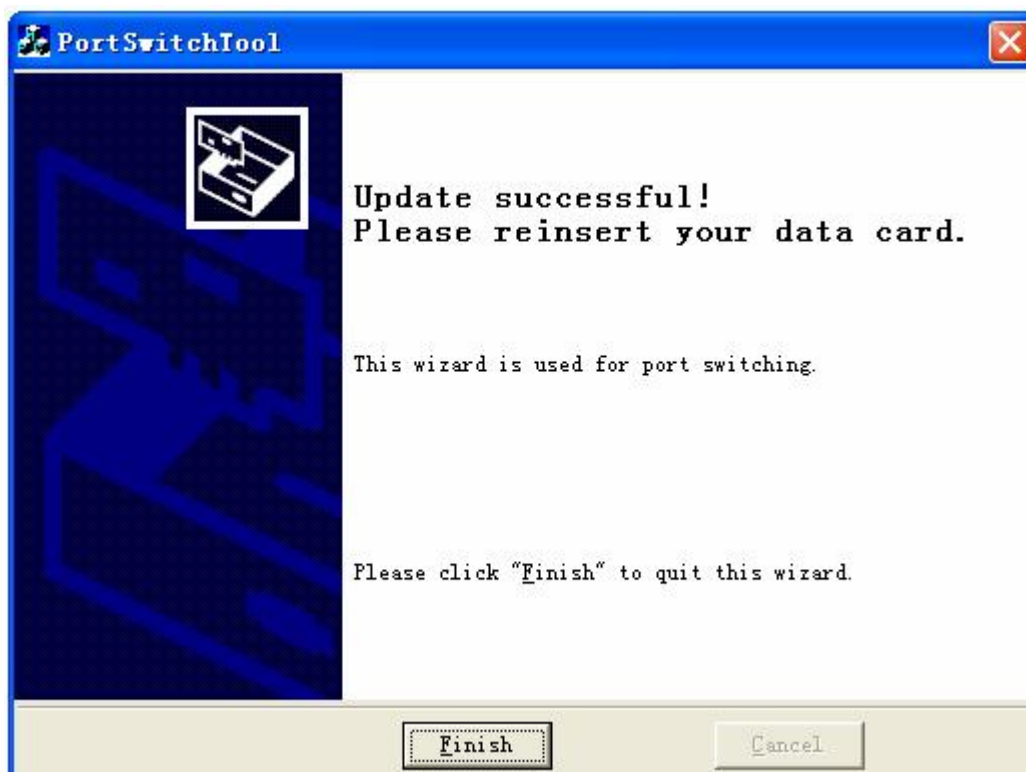
2. Please double click the tool , the below running screen will be pop-up. Then choose the operation which you need, and click “Next”, the port of the data card will change to CDROM or Diag.



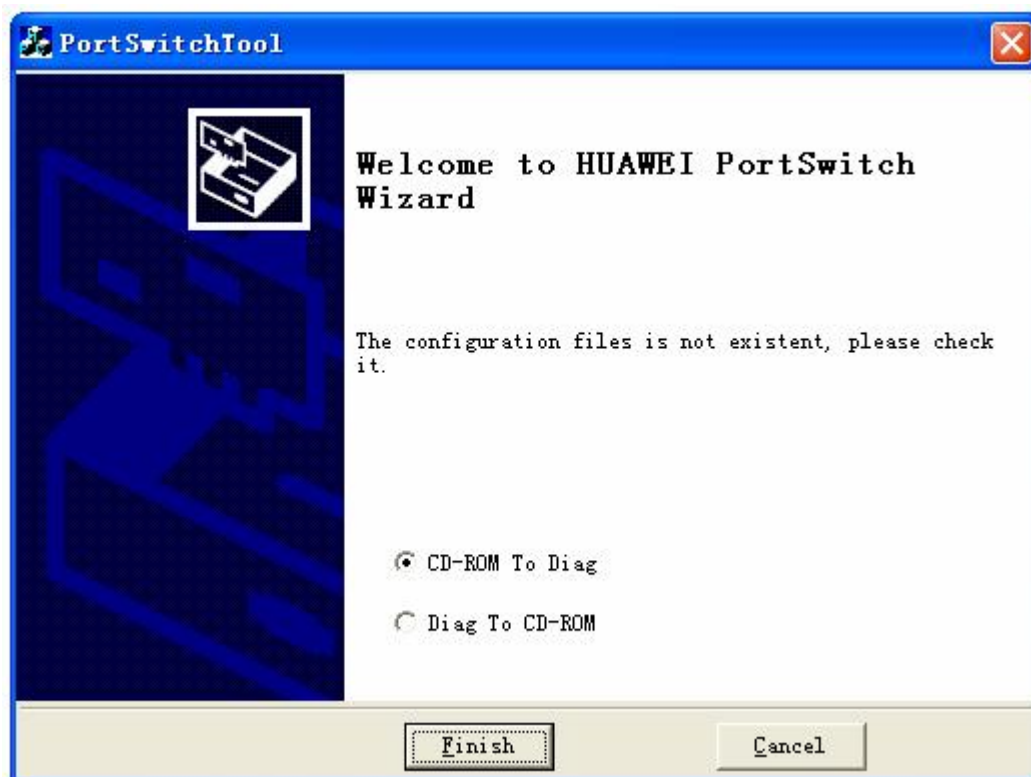
3. Press the button “Next” to continue.



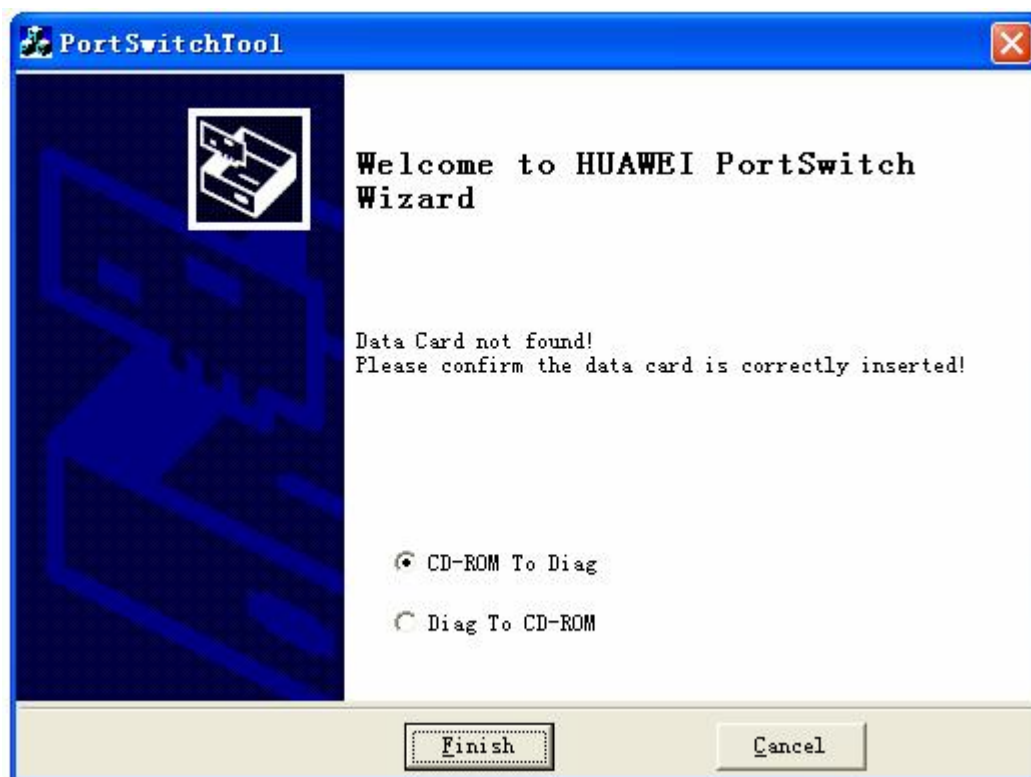
3. When the state of port convert successfully, the below screen will be pop-up..



4. If the file SwitchPort.ini doesn't exist in the same directory with the PortSwitchTool.exe, the below running screen will be Pop-up.

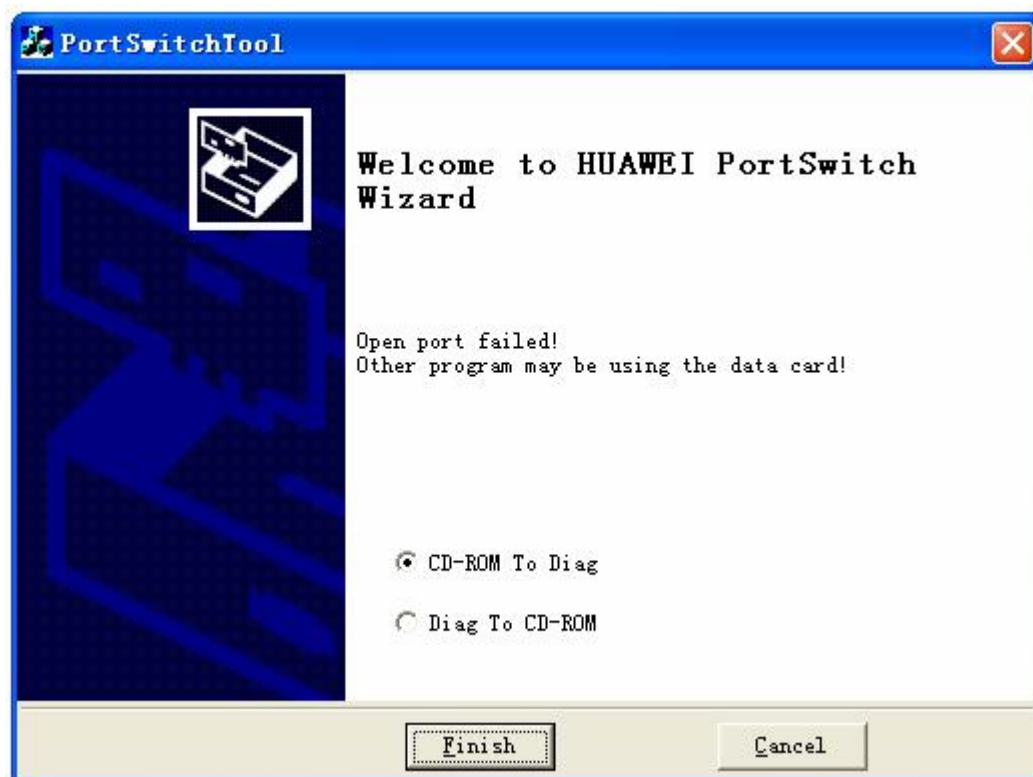


5. When the data card didn't connect to PC correctly, the below running screen will be Pop-up.



6、 When the PCUI interface is used by other program, the below running screen will be pop-up.

You should close other related program, and run the tool again.



7. Then press the button “Finish” to end this program.