

Product Highlights

Extends the range of any wireless network (802.11n or 11ac)

Up to 750 Mbps (300 Mbps -2.4GHz and 433 Mbps 5GHz)¹

11AC Wi-Fi for improved performance and reliable connections

Easily add dual band coverage to your existing single band router



DAP-1520

Wi-Fi AC750 Dual Band Range Extender

Features

Connectivity

- Wireless AC gives you high-speed wireless connectivity for your devices
- Wireless 802.11n/g/b/a backward compatibility
- Wireless speeds of up to 750 Mbps¹ (300 2.4GHZ/433 5GHZ)
- Dual-band connectivity for greater flexibility and reduced interference

Easy to Use

- Wall plug design is compact, portable and does not require additional power cables
- Built-in setup wizard and QRS Mobile app for mobile devices guide you through installation

Security

- WPA2/WPA wireless encryption to keep your wireless connection secure
- Wi-Fi Protected Setup (WPS) for secure setup with the simple press of a button

The DAP-1520 Wireless AC750 Dual Band Range Extender is a portable Wireless Range Extender that lets you expand an existing wireless network's coverage area. You can place it anywhere in your home to increase the range of your wireless network. It's unobtrusive, compact design provides flexible placement and next generation AC750 wireless performance.

Extend Your Wireless Network

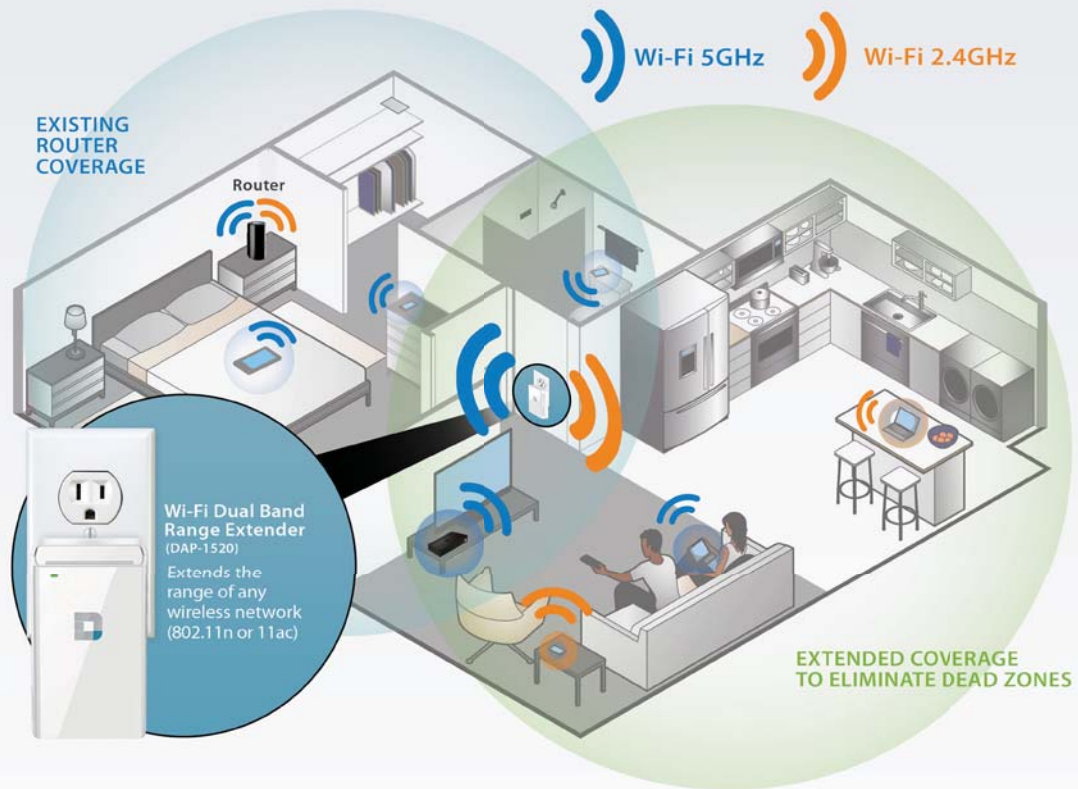
Increase the coverage of your home Wireless AC network with the sleek and easy-to-use DAP-1520 Wireless AC750 Dual Band Range Extender. Dual-band technology helps reduce interference from nearby wireless signals in the home and also provides backward compatibility with older wireless allowing you to enjoy a reliable wireless connection.

Easy to Set Up, Easy to Use

Setting up the Wireless AC750 Dual Band Range Extender is simple. You can use one-touch configuration by pushing the WPS push-button on the DAP-1520 and on the router or AP you want to extend, and the DAP-1520 will automatically configure itself for you. Alternatively, you can use the supported QRS Mobile app on your iOS or Android mobile device to set up the DAP-1520 easily or the built-in setup wizard that lets you configure it wirelessly with a PC using any supported browser..

Compact, Convenient Design

The DAP-1520 is a compact device that is ideal for use at home or a small office. Its diminutive design easily plugs into a power outlet without blocking other outlets and saves you from the hassle of dealing with a power cord. Its sleek, unobtrusive appearance blends easily into the decor of your home or office



Technical Specifications

General

Device Interfaces	<ul style="list-style-type: none"> • 802.11ac/n/g/b/a wireless LAN • WPS button 	<ul style="list-style-type: none"> • Reset button
LEDs	<ul style="list-style-type: none"> • Status/WPS 	
Standards	<ul style="list-style-type: none"> • IEEE 802.11ac (draft) • IEEE 802.11n • IEEE 802.11g 	<ul style="list-style-type: none"> • IEEE 802.11b • IEEE 802.11a
Antennas	<ul style="list-style-type: none"> • Two internal antennas 	
Plug Type	<ul style="list-style-type: none"> • Region dependent 	

Functionality

Wireless Security	<ul style="list-style-type: none"> • Wi-Fi Protected Access (WPA/WPA2) • WEP 64/128-bit encryption 	<ul style="list-style-type: none"> • WPS (PBC)
Advanced Features	<ul style="list-style-type: none"> • D-Link One-Touch Extender Setup 	
Device Management	<ul style="list-style-type: none"> • Supports QRS Mobile app for iPhone, iPad, iPod Touch, and Android mobile devices 	<ul style="list-style-type: none"> • Web UI

DAP-1520 WiFi AC750 Dual Band Range Extender

Physical	
Dimensions	• 3.62 x 2.28 x 1.35 inches (92 x 58 x 34.2 mm)
Weight	• 3.67 ounces (104 grams)
Power	• Input: 110 to 240 V AC, 50/60 Hz
Temperature	• Operating: 32 to 104 °F (0 to 40 °C) • Storage: -4 to 149 °F (-20 to 65 °C)
Humidity	• Operating: 10% to 90% non-condensing • Storage: 5% to 95% non-condensing
Certifications	• FCC • IC • CE • C-Tick • EMI/EMC • UL • Wi-Fi Certified
Order Information	
<i>Part Number</i>	<i>Description</i>
DAP-1520	Wireless AC750 Dual Band Range Extender

¹ Maximum wireless signal rate derived from IEEE Standard 802.11ac (draft), and 802.11n specifications. Actual data throughput will vary. Network conditions and environmental factors, including volume of network traffic, building materials and construction, and network overhead, lower actual data throughput rate. Environmental factors will adversely affect wireless signal range.

For more information

U.S.A. | 17595 Mt. Herrmann Street | Fountain Valley, CA 92708 | 800.326.1688 | dlink.com **Canada** | 2525 Meadowvale Blvd | Mississauga, ON L5N 5S2 | 800.361.5265 | dlink.ca

©2011 D-Link Corporation/D-Link Systems, Inc. All rights reserved. D-Link, the D-Link logo, Amplifi, MediaBridge, SharePort, D-Link Green, the D-Link Green Logo, Xtreme N, the D-Link RoHS logo and trademarks or registered trademarks of D-Link Corporation or its subsidiaries in the United States and/or other countries. Other trademarks or registered trademarks are the property of their respective owners. Visit www.dlink.com for more details.