

Smart Setup,  
No CD Required



High Gain Antenna  
For Better Coverage



Reduce Power  
Use By Over 30%



Windows 8 Compatible

**BR-6228nC V2**

## N150 Multi-Function Wi-Fi Router

Three Essential Networking Tools in One

The BR-6228nC V2 is a 150Mbps high-speed multi-function Wi-Fi solution which supports IEEE 802.11b/g/n standards and provides significantly improved coverage with a 9dBi antenna. Operating as a router, access point or range extender, the BR-6228nC V2's flexibility meets the demands of any networking applications. The smart iQ Setup wizard makes setup and installation as easy as a few clicks. Impressive performance and a competitive price make the BR-6228nC V2 a cost-effective solution for home or small office environments.

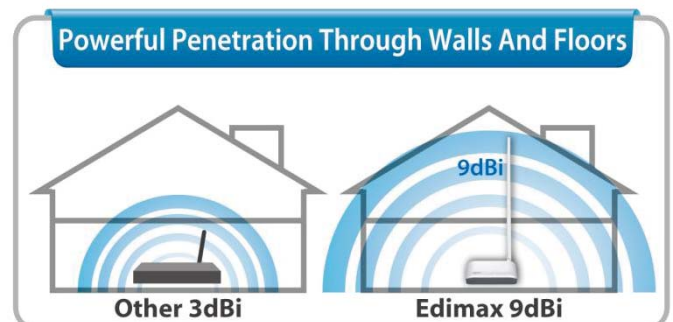
### 3-in-1 Router, Access Point and Range Extender

The BR-6228nC V2 can work as router, access point or range extender. Just configure the mode you need for your network environment using the smart iQ Setup wizard and enjoy surfing the web.



### 9dBi High Gain Antenna

Employs a 9dBi high gain antenna to enhance wireless range and coverage, providing powerful penetration through walls and floors.



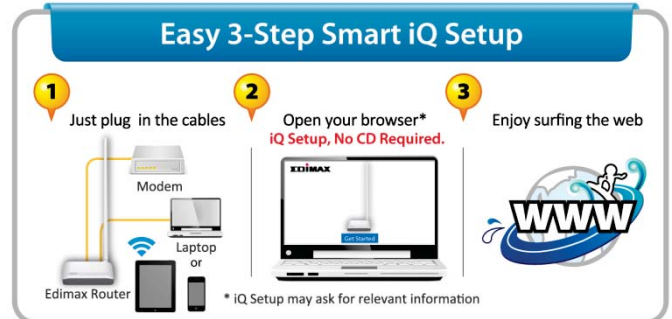
# N150 Multi-Function Wi-Fi Router

## Three Essential Networking Tools in One

BR-6228nC V2

### Smart iQ Setup

Features iQ Setup for smart, automatic and quick installation with no CD required.



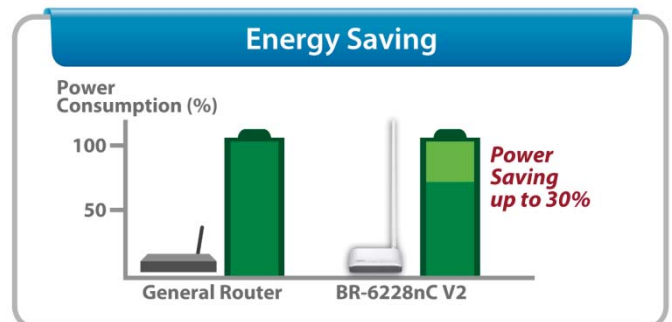
### Guest Network\*

Supports guest network to isolate the internet connection from major network. (\*Router mode only)



### Green Technology

Designed with the latest green technology, the BR-6228nC V2 uses 30% less power compared to other standard 150Mbps routers.



### Wireless Internet Service Provider (WISP) Connection Mode

With WISP support, the BR-6228nC V2 is able to share an Internet connection from a wireless ISP access point and convert it into a wired or wireless network for multiple users in your home or office.



# N150 Multi-Function Wi-Fi Router

## Three Essential Networking Tools in One

BR-6228nC V2

### Wi-Fi Protected Setup (WPS) Button

The BR-6228nC V2 has a one-click Wi-Fi Protected Setup (WPS) button to help you set up and activate a secure wireless network in a snap.



### TECHNICAL SPECIFICATIONS

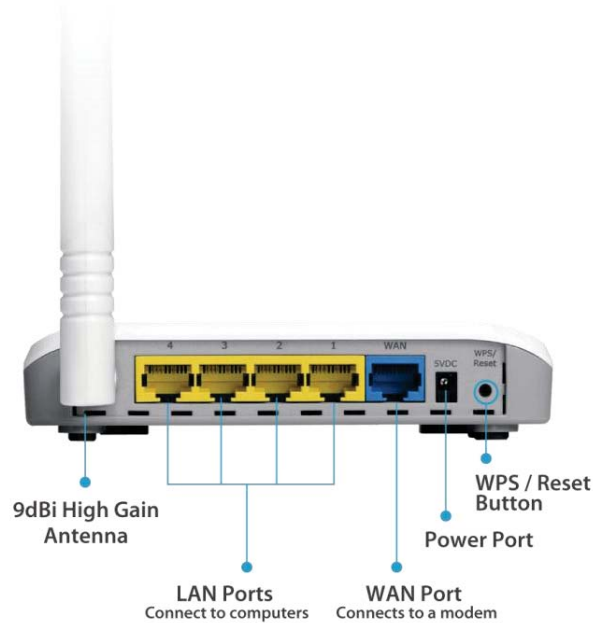
FUNCTIONS	HARDWARE INTERFACE	MANAGEMENT
<ul style="list-style-type: none"> <li>Supports router, access point &amp; range extender modes</li> <li>Port triggering for special applications</li> <li>DDNS and SIP</li> <li>Guest network</li> <li>Virtual server and DMZ hosting</li> <li>MAC/IP filter and URL blocking</li> <li>Static routing</li> <li>UPnP architecture</li> <li>VPN pass-through (IPSec/PPTP)</li> <li>Wi-Fi schedule control</li> </ul>	<ul style="list-style-type: none"> <li>1 x RJ-45 Fast Ethernet WAN port</li> <li>4 x RJ-45 Fast Ethernet LAN ports</li> <li>LED Indicators: power, wireless, WAN, LNK/ACT for LAN</li> <li>1 x 9dBi detachable antenna</li> <li>WPS/Reset button</li> </ul>	<ul style="list-style-type: none"> <li>Intuitive user interface</li> <li>System status and security log (web interface)</li> <li>Firmware upgradeable</li> </ul>
WAN	SECURITY	OUTPUT POWER & RECEIVE SENSITIVITY
<ul style="list-style-type: none"> <li>Supports WISP connection mode</li> <li>Supports RJ-45 cable/xDSL modem</li> <li>WAN protocol: PPPoE, static IP, dynamic IP, PPTP, L2TP</li> </ul>	<ul style="list-style-type: none"> <li>NAT/NAPT IP sharing</li> <li>WEP, WPA &amp; WPA2 encryption</li> <li>DHCP server/client</li> <li>QoS for critical operations</li> <li>SPI anti-DoS firewall</li> </ul>	<ul style="list-style-type: none"> <li>E.I.R.P: &lt; 20dBm</li> <li>11b (11Mbps) : -82dBm±2dBm</li> <li>11g (54Mbps) : -70dBm±2dBm</li> <li>11n (20MHz) : -67dBm±2dBm</li> <li>11n (40MHz) : -63dBm±2dBm</li> </ul>
MEMORY	INSTALLATION KIT	HUMIDITY & TEMPERATURE
<ul style="list-style-type: none"> <li>4MB NOR Flash</li> <li>16MB SDRAM</li> </ul>	<ul style="list-style-type: none"> <li>Smart iQ Setup, no CD required</li> <li>Supports smartphone, tablet or laptop setup. (iOS 4 or Android 4 and above are required for smartphone or tablet setup.)</li> </ul>	<ul style="list-style-type: none"> <li>10 – 90% (Non-condensing)</li> <li>0 – 40°C</li> </ul>
POWER ADAPTER	DIMENSIONS & WEIGHT	CERTIFICATIONS
<ul style="list-style-type: none"> <li>5VDC, 1A</li> </ul>	<ul style="list-style-type: none"> <li>135 (W) x 110 (D) x 28 (H) mm</li> <li>163g (antenna weight included)</li> <li>Antenna: 38.5mm, 40g</li> </ul>	<ul style="list-style-type: none"> <li>CE, FCC</li> </ul>

# N150 Multi-Function Wi-Fi Router

Three Essential Networking Tools in One

BR-6228nC V2

## HARDWARE INTERFACE



## APPLICATION DIAGRAMS

