

PSE30G-AT

IEEE 802.3at Gigabit PoE Injector

PSE30G-AT

IEEE 802.3at Gigabit PoE Injector

Products Description

PSE30G-AT PoE injector is compliant with IEEE 802.3af and IEEE802.3at standard, with auto-detects PD equipment. Provide DC power to PoE devices, plug and play, easy for networking deployment and the output power consumption up to 30W. PSE30G-AT can auto-start short-circuit function to cut off power supply when meet too high current or electricity interruption, to prevent equipment burnout and avoid networking failure caused by electricity interruption or installing error. This function make PSE30G-AT can be widely applied to wireless network devices, bluetooth, IP Phone which compliant with IEEE802.3af/at. Matched with Ethernet/ Power separator to change the current networking into source LAN, easy management, strengthen controlling and decrease the maintenance cost.



Key Feature

- Delivers power and data through one Ethernet cable for easy network extension.
- Compatible with IEEE 802.3af/at compliant powered devices.
- PoE Port Delivers power up to 100 meters.
- Plug and Play, no configuration required.

Product Features



Power over Ethernet

Support IEEE802.3af/at standard, automatically detect and identify powered devices compliant with the standard and provide power supply, single-port power supply up to 15.4 / 30W.



Power Supply Distance Extension

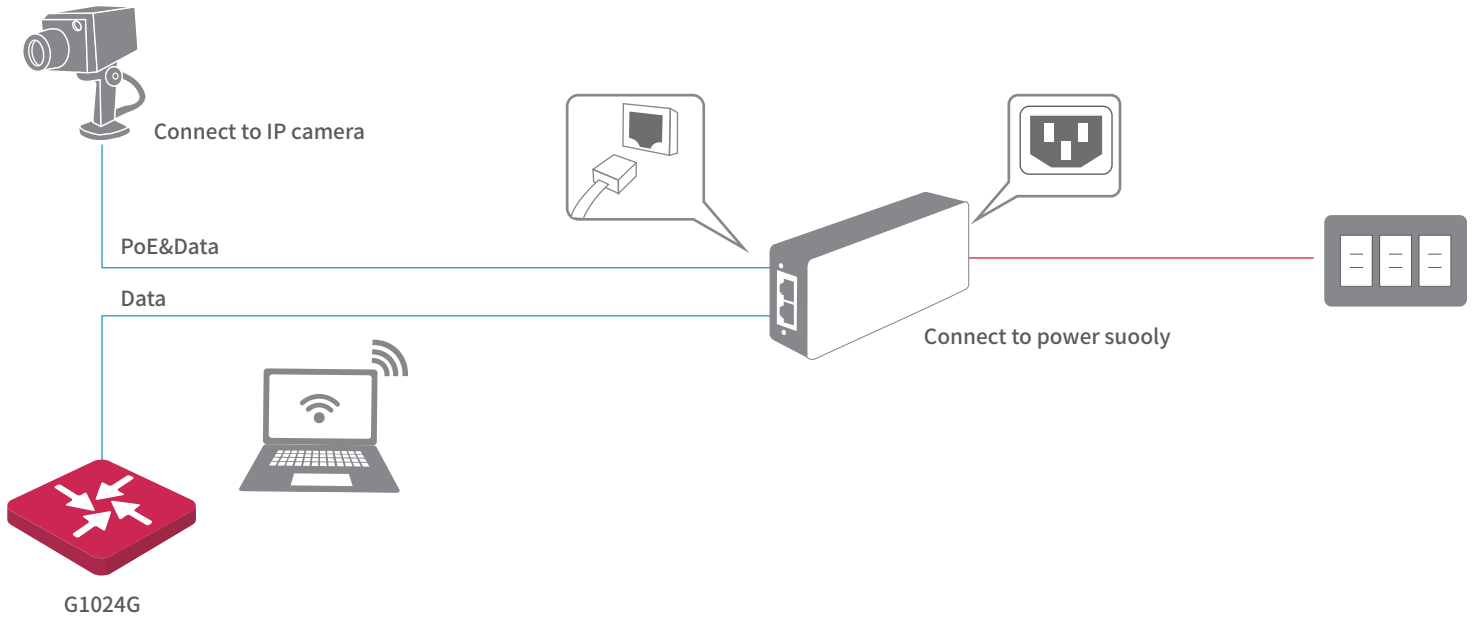
The power supply distance of standard CAT 5E and CAT 6E cable is up to 100m. It can supply power for the PD remotely, which expands the range of PoE applications, improves wiring efficiency, and better for project installation works.



Extreme Speed Transmission

10/100/1000Mbps self-adaptive RJ45 port, extreme speed and high efficient data transmission, support link-speed forwarding and MDI / MDIX auto-flip function, plug and play.

Application



Product Model	PSE30G-AT
Hardware Features	
Standards&Protocols	IEEE802.3、IEEE802.3u、IEEE802.3ab、IEEE802.3af、IEEE802.3at
Indicators	Link/Act , PoE Status
Interfaces	1 10/100/1000Mbps RJ45 Port(Data/PoE) 1 10/100/1000Mbps RJ45 Port(Data)
Input Voltage	AC: 100—240V~ 50/60Hz
Ouput Voltage	DC: 51V/0.8A(max)
Power consumption	Power Supply: 30W (max)
PoE Supply	PoE Port supports standard IEEE802.3at/af power(maximum power for PoE port is 30W), PoE power type is mid-span(45+, 78- line pair)
Dimensions (W × D × H)	132.3mm*60mm*33mm
Environment	Operating Temperature: 0°C~40°C (32°F~104°F) Storage Temperature: -40°C~70°C (-40°F~158°F) Operating Humidity: 10%~90% non-condensing Storage Humidity: 5%~90% non-condensing
Certification	FCC、CE、RoHS、UL

www.ip-com.com.cn

IP-COM

SHENZHEN IP-COM NETWORKS CO.,LTD.

ADD:Room 101, Unit A, First Floor, Tower E3, No. 1001, Zhongshanyuan Road, Nanshan District, Shenzhen,China. 518052

E-mail:info@ip-com.com.cn

Websit:www.ip-com.com.cn

Tel:+86-755-2765 3089

Fax:+86-755-2765 7178

Skype:IP-COM.Support

Specifications are subject to change without notice.Copyright ©2015 SHENZHEN IP-COM NETWORKS CO.,LTD.All rights reserved. IP-COM is the trademark of SHENZHEN IP-COM NETWORKS CO.,LTD. All other brand names mentioned herein are the trademark or registered trademarks of their respective holders.

