

300Mbps Wi-Fi Range Extender with AC Passthrough

TL-WA860RE

⦿ Features:

- Greatly extend existing wireless coverage to eliminate “dead zones”
- Extra outlet makes power available for other electrical devices
- Work as a wireless network adapter, providing wireless connectivity for your Ethernet-enabled devices
- Wireless N speed up to 300Mbps
- 2 fixed external antennas provide excellent Wi-Fi coverage and reliability
- Miniature size and wall-mounted design make it easy to deploy and move flexibly
- Easily expand wireless coverage at a push of Range Extender button
- Smart Signal Indicator Light help to find the right location to place the range extender
- Profile function remembers previously connected wireless networks
- Supports domain name-based login (<http://tplinkextender.net>) for advanced management



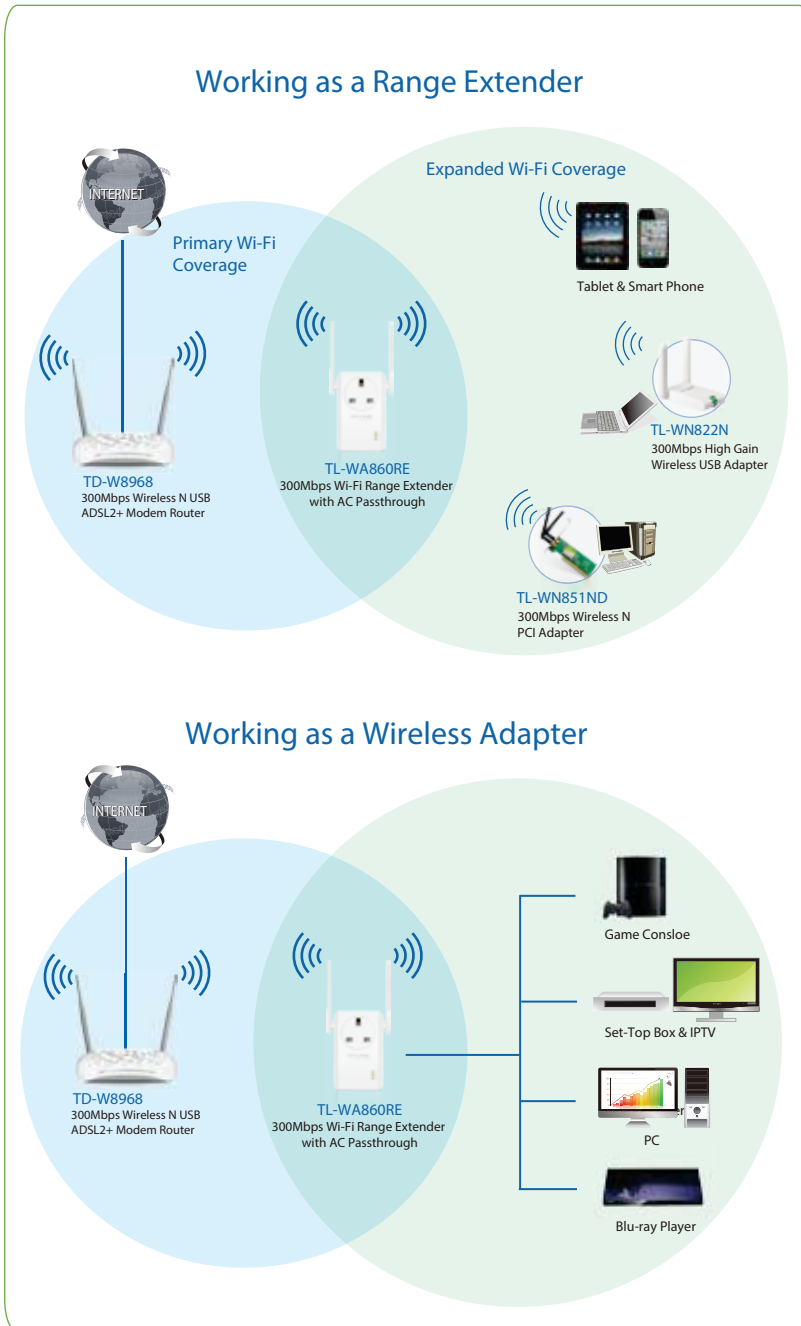
⦿ Description

TP-LINK's TL-WA860RE is designed to conveniently extend the coverage and improve the signal strength of an existing wireless network to eliminate “dead zones”. With 300Mbps wireless N speeds, Range Extender button, miniature size and wall mounting design, extending a wireless network has never been easier. In addition, its extra outlet makes power available for other electrical devices. What's more, its Ethernet port allows the TL-WA860RE to act as a wireless adapter to turn a wired device into a wireless one.

◎ Specifications:

Hardware Features	
Wireless Standards	IEEE 802.11b, IEEE 802.11g, IEEE 802.11n
Interface	1 10/100Mbps Ethernet Port (RJ45)
Button	Range Extender Button, Reset Button, On/Off Button
Antenna	2 * External
Power Consumption	About 3W
Wireless Features	
Frequency	2.4~2.4835GHz
Signal Rate	11n: Up to 300Mbps(dynamic) 11g: Up to 54Mbps(dynamic) 11b: Up to 11Mbps(dynamic)
EIRP	< 20 dBm
Receive Sensitivity	270M: -69dBm@10% PER 130M: -69dBm@10% PER 108M: -69dBm@10% PER 54M: -69dBm@10% PER 11M: -86Bm@8% PER 6M: -89dBm@10% PER 1M: -91dBm@8% PER
Wireless Mode	Range Extender
Wireless Functions	WMM(Wi-Fi Multimedia); Wireless MAC Address Filtering; Wireless Statistic; Domain Login Function
Wireless Security	64/128/152-bit WEP WPA-PSK / WPA2-PSK
Others	
Certification	CE, RoHS
System Requirements	Microsoft® Windows® 8/7/Vista™/XP/2000/ NT/98SE, Mac® OS, NetWare®, UNIX® or Linux.
Operating Temperature	0°C~40°C (32°F~104°F)
Storage Temperature	-40°C~70°C (-40°F~158°F)
Operating Humidity	10%~90% non-condensing
Storage Humidity	5%~90% non-condensing.
Dimensions (W x D x H)	4.3x 2.6 x 3.0in. (110.0 x 65.8 x 75.2mm)
Plug Type	UK

◎ **Diagram:**



Package:

- 300Mbps Wi-Fi Range Extender with AC Passthrough TL-WA860RE
- RJ-45 Ethernet Cable
- Quick Installation Guide

Related Product:

- 300Mbps Wireless N USB ADSL2+ Modem Router TD-W8968
- 300Mbps Wireless N PCI Adapter TL-WN851ND
- 300Mbps High Gain Wireless USB Adapter TL-WN822N