



ovation™
MC950D
Mobile Broadband

Quick Start Guide



Mobile Broadband when you need it.

Your Ovation MC950D allows you to surf the web with the greatest of ease, download your files, your music, manage your mail, all at speeds of up to 7.2 Mbps download and 2.1 Mbps upload.

This means true mobility to do what you want, when you want. Supported technology includes HSUPA, HSDPA, UMTS, EDGE, and GPRS. This means that the Ovation MC950D can give you Mobile Broadband speeds in Europe, North America, and Asia Pacific*.

Utilising the new Zero-CD technology, the Ovation MC950D installation procedure couldn't be more simple. Follow the next five steps, and you'll be well on your way to accessing the information super highway.

* Subject to operator roaming agreements

System Requirements

- Windows 2000, XP, Vista
Mac OS X (10.4.7 or later)
- 14 MB Hard Drive Space
- 64 MB of RAM

Pack Contents

- MC950D
A powerful Mobile Broadband Modem
- USB Cable
For use in low signal strength areas, where more power may be required, and when in use with the Clip
- Monitor Clip
Allows you to attach your USB Modem to your laptop screen or monitor

The Ovation MC950D



LED

The LED provides connections status. See Page 10 for a detailed list of the colours and their defined states

SIM Card Slot

The SIM card is inserted here

Safety Guidelines

- Avoid storing your Ovation MC950D in extreme temperatures
- Store your Ovation MC950D in a dry and clean environment
- Avoid spilling any liquid on your Ovation MC950D or immersing it in water
- Do not place any labels on the antenna as doing so could alter the sensitivity of the antenna
- Do not force the Ovation MC950D into the USB port
- Do not force the SIM card into the SIM card slot
- Do not apply force to the top or bottom of your OvationMC950D
- Remove your Ovation MC950D from the USB port before transporting your laptop

Installation

1

Insert the SIM card

- Insert the SIM card into the Ovation MC950D as shown
- Push the SIM card completely into the slot



2 Insert the Modem

- Insert the Ovation MC950D into your laptop
- The installation procedure will start automatically



3 Installation Complete

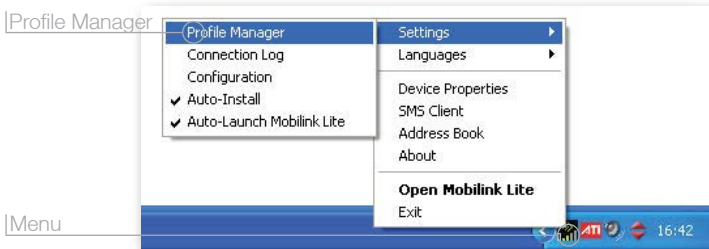
- Once the following screen appears, MobiLink Lite has successfully installed and the main program will begin



- If the installation fails to start, click the **START** menu then **MY COMPUTER**. Double Click the **CD ROM NVTL** and run the file **Liteauto.exe** In case of difficulty please contact your IT administrator.

4 Create a profile

- Open the newly installed Mobilink Lite software
- Click on the **Menu** Icon and select **Profile Manager**

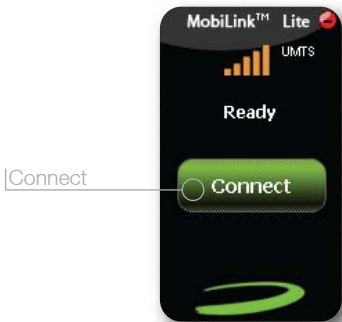


- Click **New**
- Enter the Profile Name and APN*
- Click **Next**
- If required, enter your Username* and Password*
- Click **Finish**
- Once complete please highlight the new profile and click **Set Default**

*Available from your wireless provider

5 Connect to the Internet

- Double-click the **MobiLink Lite** icon on your desktop
- If your SIM card is locked, type in your SIM code and click **OK**
- When the LED blinks Green, Violet, Blue, Yellow or Cyan select a profile and click **Connect**









NOTE: You'll find additional information about Profiles and Connection states in the User Guide available from www.novatelwireless.com

Removing your Ovation MC950D

- Click **Disconnect** to end your Internet session
- Click the **Menu** button and select **Exit**
- Remove your Ovation MC950D from the USB port



LED States

LED Color	LED State	Description
RED	 SIM Error	Flashing: SIM card may be missing or inserted incorrectly
	No Service	Solid: GPRS/EDGE/UMTS/HSDPA cellular service is currently not available
GREEN		Flashing: GPRS service is available
		Solid: Connected to a network using GPRS
VIOLET		Flashing: EDGE service is available
		Solid: Connected to a network using EDGE
BLUE		Flashing: UMTS service is available
		Solid*: Connected to a network using UMTS
YELLOW	 HSDPA	Solid*: HSDPA service is available and is being used during the download
CYAN	 HSUPA	Solid*: HSUPA service is available and is being used during the upload

* The LED may appear to flash blue and then yellow or cyan as the service transitions between UMTS and HSDPA/HSUPA